



This Issue

- WQ Officer & Chairman Reports
- Virtual Quilt Shows, Lectures, & Classes
- Call for Entries
- Neighborly Guild Calendar

Westside Quilters
Holiday Tea

Saturday, December 6th
2:00pm – 4:00pm

Pat Karasick's home
 11837 North Park Ave
 Los Angeles, CA 90066





~~~~~

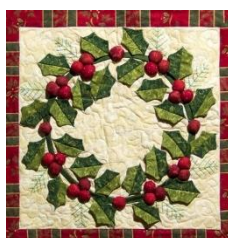
## **Upcoming Workshops & More**



- Saturday, **December 6<sup>th</sup>** WQ Holiday Tea, mark your calendar.
- **Saturday, January 3, 2026 Sew-In**
- **February 7, 2026 Quarterly Meeting** see page 4
- Check out the Westside Quilters [website](#) to see all our 2025 programs!

### **National Wreaths Across America Day**

*"National Day" pictures are actual quilts.*  
December 20<sup>th</sup>



# Westside Quilters Annual Holiday Tea...

Saturday, December 6<sup>th</sup>

2:00pm – 4:00pm

Our Holiday Tea will be **IN-PERSON!**

Pat Karasick's home

11837 North Park Ave Los Angeles, CA 90066



Plans are being made for our annual **Holiday Tea** on **December 7<sup>th</sup>** from **2-4 PM!**

Please bring sweet or savory finger foods to share (nothing that needs utensils). We will provide tea and paper goods. If you'd like, bring one quilt or other handmade project that you made this past year to share with the group.

We will have a Quilters' Showcase to share our quilts. We are looking forward to seeing you all in person to celebrate this past year together and wish each other a happy 2026!!

Program  
Committee



Members put on your hats and your pearls and join us for some Holiday Cheer!

National Bartender Day  
Dec. 5<sup>th</sup>



National Call a Friend Day  
Dec. 28<sup>th</sup>



National Mutt Day Dec. 2<sup>nd</sup>



## ***Programs.....***

### **Upcoming 2026 Programs and a request**

A new year is coming soon - check out upcoming programs for early 2026. After March we are moving back to the original 2nd Saturday of the month for our meetings and workshops.

January 10 - Winter Sew-in, 10:00am-3:00pm. Join us for the first of 4 in person sew-ins during 2026. Come and go or stay for the whole time.  
Location: LAPD Pacific Division Station, 12312 Culver Blvd., Los Angeles.

February 7 - Quilter, designer and author Youngmin Lee will join our Quarterly Meeting speaking about Korean Bojagi quilts. She will be on Zoom. See more information in this newsletter.  
Location: Sewing Arts, 2306 Corinth Ave, Los Angeles.

March 21 - It's National Quilting Day! Join us for a Zoom workshop with Kristin Echols teaching Seminole Patchwork. This will be a 4-hour workshop from 9:00am-1:00pm.  
More information to come.  
Location: Your sewing room!



### **Wanted: Program Co- Chair**

The Programming committee is down to one person. We really need at least two members to share the work. Please consider joining us.

Here are some of the duties and responsibilities of the Programming Committee:

- Schedule Quarterly meeting speakers and Zoom or in-person workshops.
- Attend WQ Board meetings in person or on Zoom.
- Send information about speaker/workshop teacher to be included in the newsletter and on the website.
- Set up Quarterly meetings at Sewing Arts Center.
- Desire to meet new people.
- Meet the challenge of invigorating Westside Quilters Guild of Los Angeles.

Email Terrie Dorio at [terriedorio@gmail.com](mailto:terriedorio@gmail.com) if you are interested.



## ***Philanthropy.....***

We finally have homes for all of the quilts you all have donated. Some will go to the UCLA Ronald Mc Donald House and the rest will go to a church event giving to teen survivors from the Altadena fires. We can still use a few more quilts so if you have any finished quilts you can either bring them to the Holiday Tea Saturday the 6th, drop them off at my house or let me know if they need to be picked up. Looking forward to seeing you at the tea.

Luann Jaffe and Virginia Marshall  
Philanthropy









**WQ Quarterly Meeting**  
**Youngmin Lee**  
**“Bojagi Quilts”**  
 Our speaker over Zoom

**Saturday, February 7th**

Sewing Arts Center (and on zoom)  
 2306 Corinth Ave, Los Angeles, CA 90064  
 Social Hour at 9:30,  
 Meeting from 10:00am to 12:00pm

Korean-born artist Youngmin Lee holds a master’s degree in fashion design and a bachelor’s degree in clothing and textiles. She has presented numerous workshops, classes and demonstrations on Korean arts and crafts around the Bay Area. Recently she has demonstrated her Bojagi and Maedub in Asian Art Museum in San Francisco as a part of Asia Alive Program. She also has participated Oakland Museum’s Lunar New Year celebration with her Bojagi and Maedub artwork. She has written a book, Bojagi: the Art of Korean Textiles and also leads textile tours of Korea.

|                                                |                                                                                     |                                            |                                                                                      |                                      |                                                                                       |
|------------------------------------------------|-------------------------------------------------------------------------------------|--------------------------------------------|--------------------------------------------------------------------------------------|--------------------------------------|---------------------------------------------------------------------------------------|
| International Day of Banks<br>December 4       |  | National Eat A Red Apple Day<br>December 1 |  | Gingerbread House Day<br>December 12 |  |
| International Civil Aviation Day<br>December 7 |  | National Violin Day<br>December 13         |  | National Cookie Day<br>December 4    |  |

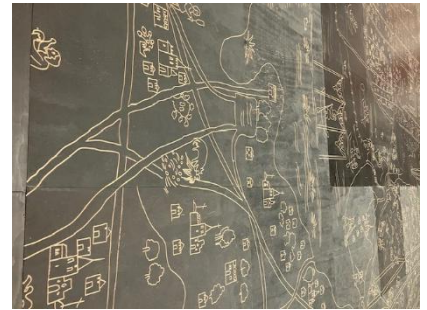
## Leadership.....

### What's New?

By Pat Karasick

**LACMA** (Los Angeles County Museum) has a beautiful exhibit on wood block prints. Why is that important to quilters? Calico was printed with blocks.

Some of the Hoffman fabric is still printed using blocks. There are some great examples of clothing made with block printed fabric. The floor is a carved linoleum, quite remarkable. You can put on booties and walk on it. But do not touch it!



Jane Austin is being honored on her 250<sup>th</sup> birthday on December 16<sup>th</sup>. **Westside Quilters will be celebrating with a traditional cream tea on Saturday, December 6, 2:00 P.M.-4:00 P.M.** Think crustless sandwiches, scones with clotted cream and lemon curd, and deviled eggs. Everything is bite size to be eaten with your fingers, not forks. Cookies, tartlets and petit fours, oh my! I'll provide teacups and the tea service. Black and herbal tea will be available. You are invited to bring savories and sweets. Take away boxes will be available. Hopefully, the weather will cooperate and we can be on the back porch, dress for the day's climate.

Location is Pat's apple green house- 11837 North Park Ave. LA, CA 90066  
North of Washington Place, in-between East and Marcase!  
Cell: 213-494-7586. Consult your GPS navigation system.  
Street parking available.

We will have a showcase of quilts that you bring with you. Luann and Virginia will be collecting philanthropy quilts to be handed out in Altadena to teen survivors in early January. Ronald McDonald House families will be provided with quilts to comfort them during their stressful time while their child is in the hospital.

Happy Holidays !



Pat Karasick  
Acting President

## Treasurer

Karynn Dittmar, Treasurer

|                                       |         |                |
|---------------------------------------|---------|----------------|
| <b>OPENING BALANCE AS OF 5/25/25</b>  |         | <b>5370.25</b> |
| <b>INCOME</b>                         |         |                |
| Membership Dues / Donations           | 1555.00 |                |
| Workshop Fees                         | 0.00    |                |
| Guest Fees                            | 0.00    |                |
| Fabric Sale Fundraiser                | 0.00    |                |
| <b>TOTAL INCOME</b>                   |         | <b>1555.00</b> |
| <b>EXPENSES</b>                       |         |                |
| Workshop Expense                      | 0.00    |                |
| General Meeting Expense               | 550.00  |                |
| Equipment for Meetings                | 0.00    |                |
| Charitable Contributions              | 0.00    |                |
| Bank Adjustment                       | 0.00    |                |
| Administrative Expenses               | 0.00    |                |
| Membership Expenses                   | 196.14  |                |
| SCCQG Insurance                       | 212.75  |                |
| Website                               | 323.34  |                |
| PO Box Rental                         | 268.00  |                |
| Philanthropy / Ed. Expense            | 0.00    |                |
| Printing / Promotion / Admin.         | 0.00    |                |
| Square Up/Pay Pal Fees                | 4.52    |                |
| Government Fees                       | 25.00   |                |
| <b>TOTAL EXPENSE</b>                  |         | <b>1579.75</b> |
| <b>NET INCOME</b>                     |         | <b>-24.75</b>  |
| <b>CLOSING BALANCE as of 11/25/25</b> |         | <b>5345.50</b> |

## Website and Social Media:

Hopefully by the time you read this, the WQ Website will be updated with the upcoming programs for 2026. Programs Chair Terrie Dorio has come up with some great opportunities! All will be revealed on the Calendar page.

Sally Wright, Website and Social Media Manager.



Ann Chach

December 7

National Crossword Puzzle Day December 21<sup>st</sup>



# ***Calls for Entry December 2025***

## **Lots of opportunities!**

We're sort of between seasons right now... there will be lots of new opportunities after the first of 2026!

Continuing our notifications for ways to display your quilts and textile pieces to a wider audience... For some great information from a veteran on how to get your work shown see this blog entry from Sue Bleiweiss <https://suebleiweiss.blog/2018/06/14/getting-your-work-out-there/> I also recommend this blog post from Lyric Kinard on how to choose venues to display your work - <https://lyrickinard.com/2019/05/showing-your-work-choosing-venues/>

Here are some suggestions for quilt entry photography from International Quilt Festival.

### **PHOTOGRAPHING YOUR QUILT FOR SUBMISSION**

- Having a great photo of your quilt - straight on, in focus, not on a bed or held up showing hands and feet, super important. There is lots of great info on quilt photography on line. Google!

Entering shows is not difficult, but to begin here are a few guidelines: Always make sure you read everything in the call including the calendar, requirements, rules, etc.

- Especially the rules! Will save headaches and disappointment later on.
- Keep a record on your entries so you won't be caught with a quilt needing to go two places at once.
- Having to remove a quilt from a show or exhibit because you misread the exhibition dates is a no-no. Ask me how I know...
- Don't be intimidated or depressed by a rejection! There are lots of different reasons why a quilt doesn't fit into a specific show. It is usually not because your quilt is bad!

The calls below are just a sample of the many opportunities out there. For more search "Fiber Art Calls for Entry" or "Quilt Calls for Entry"

## **Here are some calls... More to come soon.**

### **Vivid, Fiber Arts magazine**

<https://www.fiberartnow.net/calls/>

Selections will be featured in the spring 2026 issue of Fiber Art Now, and be eligible for an on-site exhibition.

*Entry deadline December 8, 2025*

### **Mid-Atlantic Quilt Festival (Hampton, VA)**

February 26-March 1, 2026

<https://www.quiltfest.com/upcoming-shows-and-events/mid-atlantic-quilt-festival/>

*Entry deadline January 20, 2026*

### **Mid-Atlantic Wearable Art Competition (Hampton, VA)**

February 26-March 1, 2026,

<https://www.quiltfest.com/upcoming-shows-and-events/mid-atlantic-quilt-festival/>

*Entry deadline January 20, 2026*

### **New Quilts From An Old Favorite: Food**

<https://quiltmuseum.org/nqof2026/>

Upcoming Exhibits - The National Quilt Museum

February 18, 2026-June 2027(ship+show)

*Entry deadline January 14, 2026*



### **Questions?**

Sally Wright [sally@sallywrightquilts.com](mailto:sally@sallywrightquilts.com)

## Out and About:.....

**Pasadena Museum of History** - Exhibition: Stories, Traditions & Designs: Spotighting the African American Quilters of Los Angeles

Members of the African American Quilters of Los Angeles (AAQLA) will select from among their own creations for a display that expresses their history, creativity, and shared experiences.

## Member Articles and Information to share.....

**FREE TO SP%@K!** through January 7, 2026.

Location: Village Well Books & Coffee – Studio, 9900 Culver Blvd, Culver City, CA 90232

Exhibit Description: Fiber art as protest: three SoCal artists transform fabric, text, and tradition to confront censorship, free speech, and democracy.



*The Revolution Kind by Kathryn Pellman*

Village Well Books & Coffee presents “Free To Sp%@k!”, a group exhibition by Southern California fiber artists Kathryn Pellman, Kelly Hartigan Goldstein, and MartyO, who test the tensile strength of free expression when language itself has become a battleground. Timed to coincide with the American Library Association’s annual Banned Books Week (October 4–11, 2025), the artists pose a direct question: What happens to a democracy when the First Amendment is treated as negotiable rather than fundamental?



*The Weight of Letters by Marty Ornish*

|                                                                                                                                                     |                                                                                                                                                                  |                                                                                                                                                      |
|-----------------------------------------------------------------------------------------------------------------------------------------------------|------------------------------------------------------------------------------------------------------------------------------------------------------------------|------------------------------------------------------------------------------------------------------------------------------------------------------|
| <p><u>Wright Brothers Day</u><br/>Dec. 17<sup>th</sup></p>       | <p><u>National Short Girl Appreciation Day</u> December 21<sup>st</sup></p>  | <p><u>National Champagne Day</u><br/>Dec. 31<sup>st</sup></p>   |
| <p><u>Wildlife Conservation Day</u><br/>Dec. 4<sup>th</sup></p>  | <p><u>National Fruitcake Day</u><br/>Dec. 27<sup>th</sup></p>                | <p><u>National Poinsettia Day</u><br/>Dec. 12<sup>th</sup></p>  |



## A NEIGHBORLY GUILD CALENDAR

| December 2025                                                                                                                 |                                                                                                                      |
|-------------------------------------------------------------------------------------------------------------------------------|----------------------------------------------------------------------------------------------------------------------|
| December 3<br>Santa Monica Quilt Guild<br><a href="http://www.santamonicaquiltguild.org">www.santamonicaquiltguild.org</a>    | <u>Holiday Potluck &amp; Completed UFOs</u>                                                                          |
| December 6<br>Westside Quilters<br><a href="http://www.WestsideQuiltersLosAngeles.org">www.WestsideQuiltersLosAngeles.org</a> | <u>Holiday Party</u>                                                                                                 |
| December 8<br>LA Modern Quilt Guild<br><a href="http://www.LAMQG.org">www.LAMQG.org</a>                                       | <u>Meeting</u>                                                                                                       |
| December 9<br>South Bay Quilters Guild<br><a href="http://www.southbayquiltersguild.org">www.southbayquiltersguild.org</a>    | <u>Holiday Party</u>                                                                                                 |
| December 13<br>Glendale Quilt Guild<br><a href="http://www.glendalequiltingguild.org">www.glendalequiltingguild.org</a>       | <u>Holiday Party</u>                                                                                                 |
| December<br>San Fernando Valley Quilt Guild<br><a href="http://www.sfvvg.net">www.sfvvg.net</a>                               | <u>TBD</u>                                                                                                           |
| January 2025                                                                                                                  |                                                                                                                      |
| January 3<br>Westside Quilters<br><a href="http://www.WestsideQuiltersLosAngeles.org">www.WestsideQuiltersLosAngeles.org</a>  | <u>Sew-In</u>                                                                                                        |
| January 7<br>Santa Monica Quilt Guild<br><a href="http://www.santamonicaquiltguild.org">www.santamonicaquiltguild.org</a>     | <u>Marge Tucker</u><br><u>Lecture</u>                                                                                |
| January 9<br>Glendale Quilt Guild<br><a href="http://www.glendalequiltingguild.org">www.glendalequiltingguild.org</a>         | <u>Meeting</u>                                                                                                       |
| January 11 & 12<br>San Fernando Valley Quilt Guild<br><a href="http://www.sfvvg.net">www.sfvvg.net</a>                        | <b>Chloe Cumbow</b><br>Lecture: "Quilt Reflections, Responses, & Fabric Rescues"<br>Workshop: Boutique Stitch-Up Day |
| January 12 & 17<br>LA Modern Quilt Guild<br><a href="http://www.LAMQG.org">www.LAMQG.org</a>                                  | <u>Carolina Oneto</u><br><u>Lecture: <i>Playing with Color and Value</i></u><br>Workshop: Curves and transparencies  |
| January 27<br>South Bay Quilters Guild<br><a href="http://www.southbayquiltersguild.org">www.southbayquiltersguild.org</a>    | <u>Terese Duryea Wong</u><br>Lecture: Sewing and Survival: Native American quilts from 1880 to 2022                  |

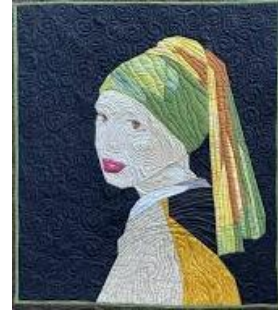
National Llama Day  
Dec. 9<sup>th</sup>



National Ugly Sweater Day  
Dec. 19<sup>th</sup>



National Wear Your Pearls Day  
Dec. 15<sup>th</sup>



## Westside Quilters Board Meeting October 11, 2025

Pat Karasick called the meeting to order on Zoom with Karynn Ditmar, Luann Jaffe, Vicki Vaughn, Sally Wright, Virginia Marshall and Debbie Nussbaum in attendance.

Pat shared information from the Southern California Counsel of Quilts Guilds that there will be a large increase for their Liability Insurance and that will mean that our insurance will be increased as well. She also mentioned that we are cleared at the Pacific Community Police Station for our November Philanthropy Sew-in.

Karynn said we have \$5492.35 in the bank after paying our insurance and taxes. There is an issue with the IRS that needs to be addressed not pertaining to our payment.

Vicki mentioned the upcoming programs including fabric stamping with Rebecca Chamlee planned for Fall 2026 and a lecture on Japanese Kawaii quilts with Teresa Durya-Wong. There was discussion about organizing a fabric dying workshop in Pat's backyard for interested members. Pat and Karynn will provide the dyes.

Membership is currently at 40.

Luann has at least 40 quilts waiting to be donated from our members. We are trying to get a contact for the Altadena fire victims and trying to get a contact for the UCLA Ronald McDonald House which currently has 11 rooms available out of 33.

Debbie would like newsletter articles preferably by October 23 so that the newsletter will remind members about the November 1 Philanthropy sew in.

Sally has made some changes to make our website work. She would like some update on upcoming speakers and/or workshops for the website.

Sally also told us that Westside Quilters has 1300 followers.

Other issues were discussed regarding our meetings at Sewing Arts regarding Zoom meetings making sure that everything is in order before the meetings start so we don't have interruptions during the meeting. Also discussed was the noise coming from too many computers being open at the same time and the noise coming from outside our meeting room.

Announcements for upcoming events are a Maker's Mark holiday boutique event November 15th in Playa del Rey with 80 vendors and our annual holiday tea on December 6th at Pat's house from 2-4PM.

Respectively submitted,

Luann Jaffe  
Secretary

---

International  
Mountain Day  
December 11<sup>th</sup>



National Letter  
Writing Day  
December 7<sup>th</sup>



Winter  
Solstice  
Dec. 21<sup>st</sup>



